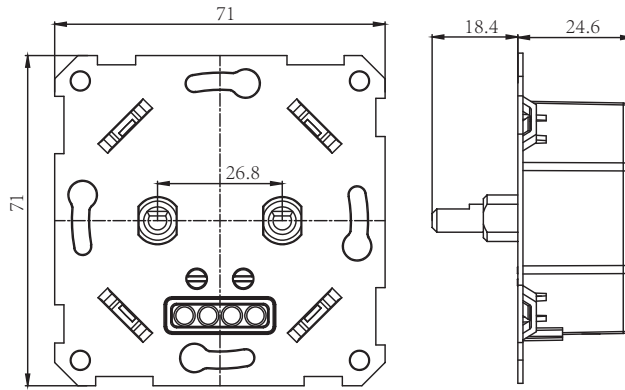


User Guide

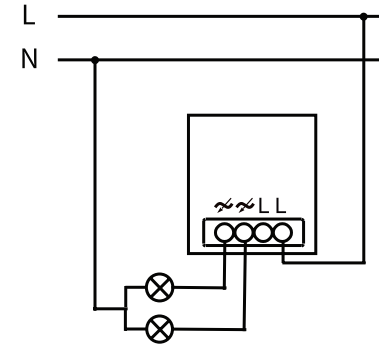
Double LED Dimmer Item NO.: EU-TP100N



1. Technical Data

Model No.	EU-TP100N	
Description	Double LED Dimmer	
Input Voltage	220-240V	
Input frequency	50Hz	
Load	LED	3-100Wx2
	Incandescent	3-100Wx2
	Halogen	3-100Wx2
Dimming mode	Trailing edge	
Control Way	One way per channel	
Material	Heatsink	Aluminum
	Bottom Case	PC
Color	White	
Weight(g)	64.1	
Operating temperature	-10℃ ~ +40℃	
Dimension(mm)	71*71*43*	

2. Dimmer wiring diagram



3. INSTALLATION

1. Make sure the electricity is switched off before any operation, connect the wire as shown in the "wire connection".
2. Install the dimmer into the junction box.
3. Switch on electricity, push shaft button to ON or OFF, turn the shaft to dimming brightness. When lamps are flashing, adjust the min setting to the minimum brightness level, make lamps stable.
4. When all settings are finished, you can fit the dimmer in the wall. Cover the frame and the dimmer knob on the dimmer.

*If the dimmer is overloaded and gets too hot, the dimmer will start the protection function, so the dimmer will stop working. When you solve the issue, 5 minutes later push the rotary to reset the dimmer, dimmer will then work well again.

MIN.BRIGHTNESS SETTING

- To set the min. brightness to avoid flickering or satisfied min brightness:
- Ensure the lamp module is switched ON
- Anti-clockwise the Knob
- Clockwise the VR - Variable Resister
- Anti-clockwise the VR to decrease the brightness at the min. & max. point.

4. WARNING

- a. Installation must be carried by a qualified electrician.
- b. Before installation, please check whether it conforms to local electric standards
- c. Power supply must be turned off when install and clean the dimmer.
Wipe the surface dust or dirt with soft cloth or tissue, do not use the detergent or other corrosive chemical solution.
- d. Please place and protect the cover properly when it's in installation to avoid the damage.
- e. There is no strong impact, vibration, electromagnetic field interference, corrosion, or dusty gas around the usage environment
- f. The product should avoid frost, condensation, water seepage, rain, etc.