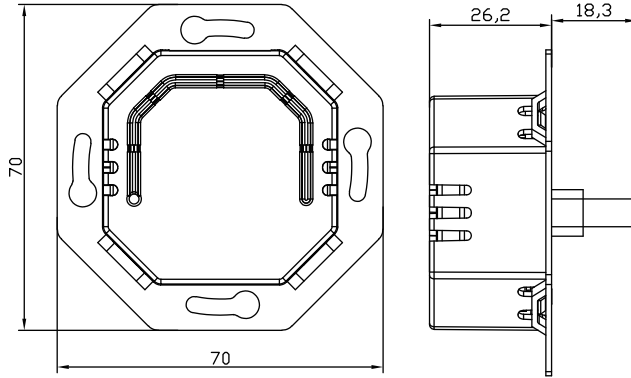


User Guide

Zigbee Rotary Dimmer Item NO.: D684E2-ZG

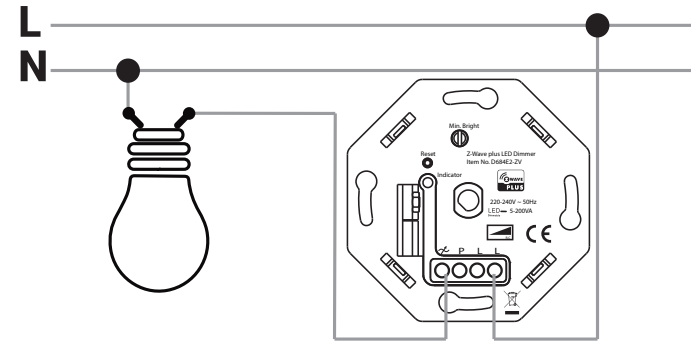


- ① Light off memory
- ② Over current protection
- ③ Over-temperaure protection

1. Technical Data

Model No.	D684E2-ZG	
Description	Zigbee Rotary Dimmer	
Input Voltage	220-240V	
Input frequency	50Hz	
Load	LED	5-200W
	Incandescent	5-300W
	Halogen	5-300W
Dimming mode	Trailing edge	
Control Way	One way	
Material	Heatsink	Aluminum
	Bottom Case	PC
Color	White	
Weight(g)	50.9	
Dimension(mm)	70*70*44.5mm	

2. Dimmer wiring diagram



3. Opreating and function

1. Setting min. light level

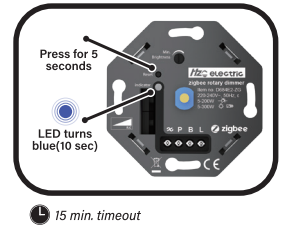
Turn on the lights using the dimmer shaft, Then turn the dimmer shaft as far as possible to the left (minimum light output). Do the lights blink? Then use a screwdriver to slowly turn the MIN potentiometer to the right for stable light, Is the light already stable? Then slowly turn the MIN to the left for even better dimmability, to just before the point where the lamps start blinking. This is the best dimmability of the LED lamps.

2. Put dimmer into pairing mode

Remove the device from the previous Zigbee network if it has already been added, otherwise pairing will fail.

Press the reset button twice.

The indicator light starts flashing **blue** and stays on for **10 seconds** when pairing is successful. Timeout **15 minutes**

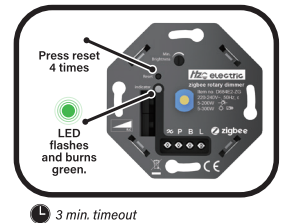


3. TouchLink

Reset the dimmer if it is already included in a Zigbee network.

Press the reset button **4 times**, the indicator starts flashing green and stays on for **10 seconds**.

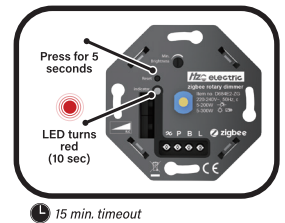
Bring the remote within 10 cm of the smart dimmer and set the remote to TouchLink. The LED will flash several times on successful connection
Note: If the dimmer and touchlink device are not connected to a hub, a maximum of 1 touchlink device can be linked. If you want to link multiple touchlink devices, you will always need a Zigbee hub.



3. Reset the dimmer

Press and hold the reset button for **5 seconds**, the indicator will remain red for **10 seconds**.

Please note that all configuration parameters will be reset after the device is reset or removed from the network.



4. WARNING

- a. Installation must be carried by a qualified electrician.
- b. Before installation, please check whether it conforms to local electric standards
- c. Power supply must be turn off when install and clean the dimmer.
Wipe the surface dust or dirt with soft cloth or tissue, do not use the detergent or other corrosive chemical solution.
- d. Please place and protect the cover properly when it' s in installation to avoid the damage.
- e. There is no strong impact, vibration, electromagnetic field interference, corrosion, or dusty gas around the usage environment
- f. The product should avoid frost, condensation, water seepage, rain, etc.